

# LOWE'S OF LAKE PARK

BEING A PORTION OF  
SECTION 19, TOWNSHIP 42 SOUTH, RANGE 43 EAST  
TOWN OF LAKE PARK, PALM BEACH COUNTY, FLORIDA

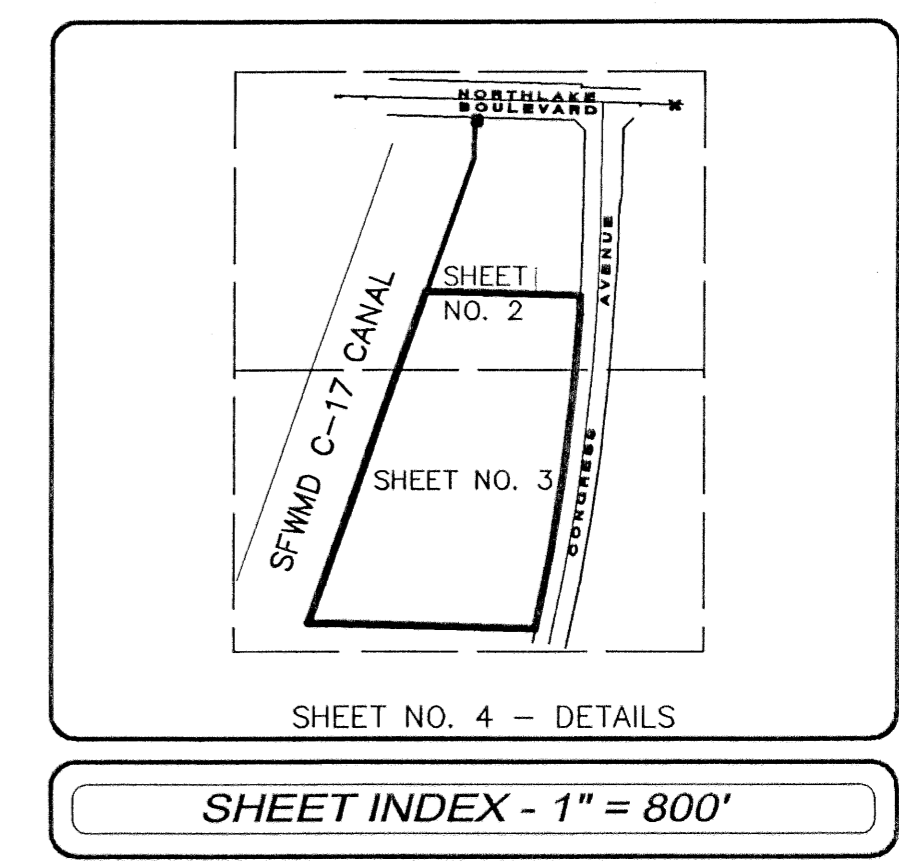
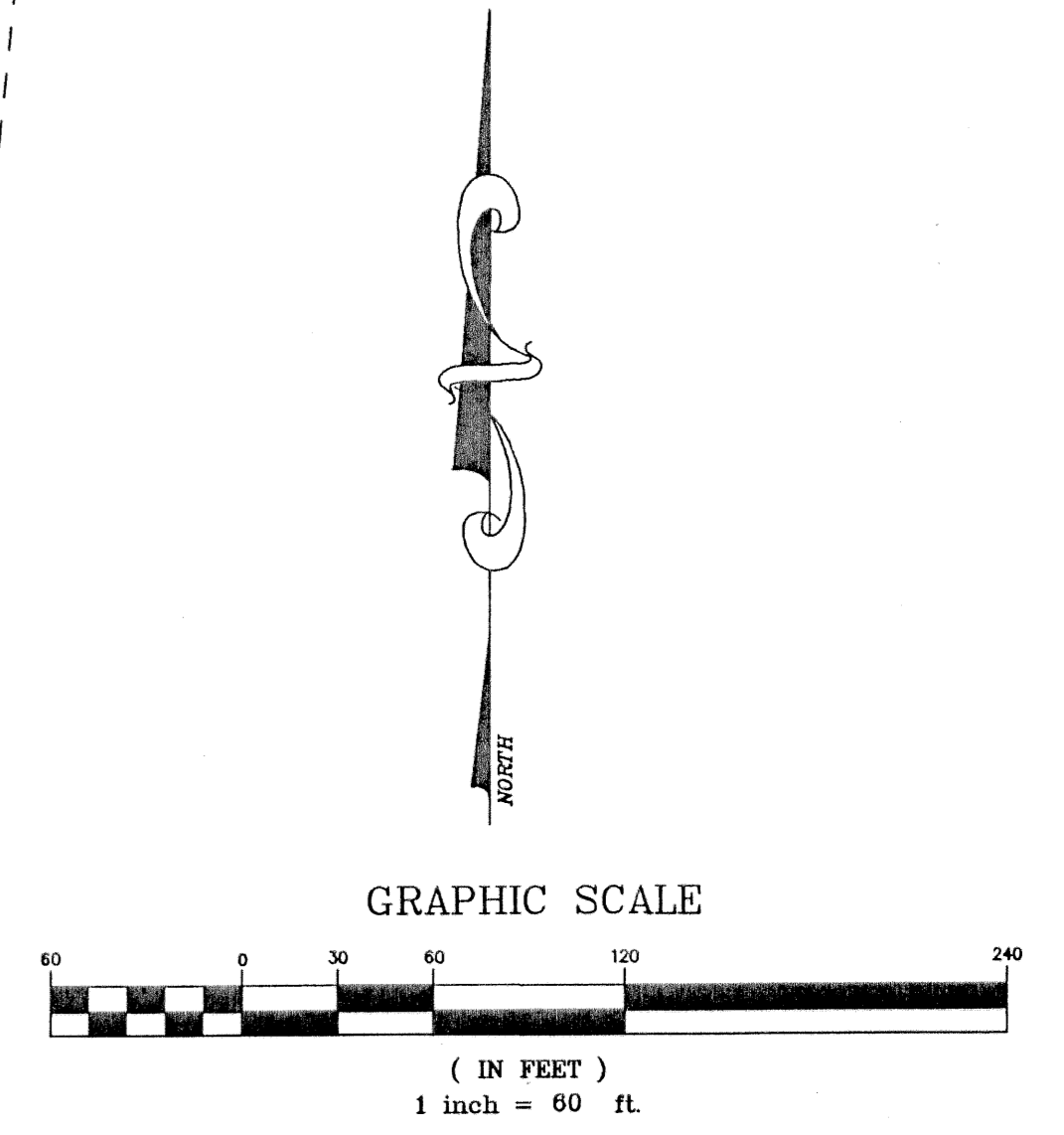
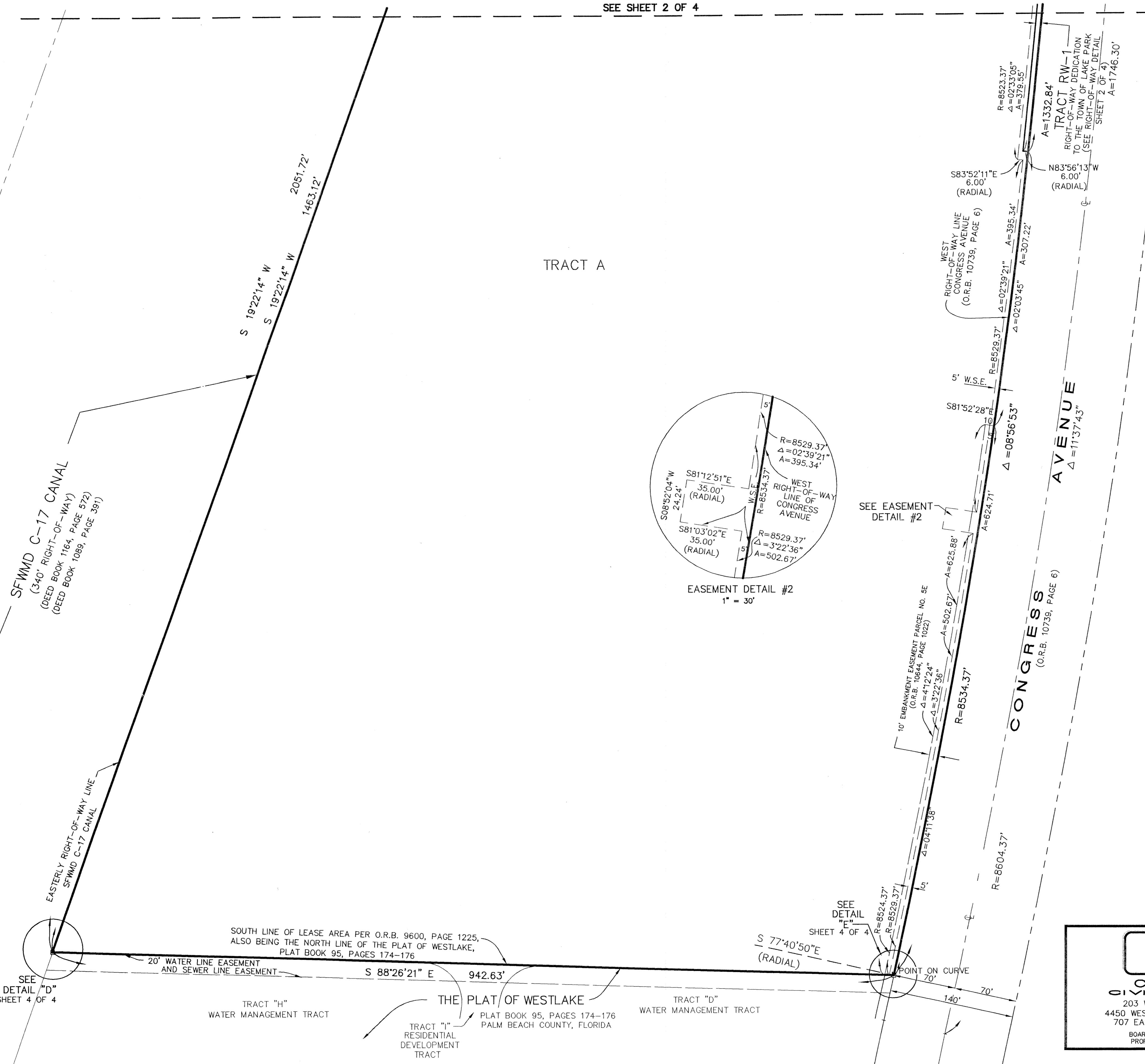
SEE SHEET 2 OF 4

# 201

STATE OF FLORIDA  
COUNTY OF PALM BEACH  
THIS PLAT WAS FILED FOR RECORD \_\_\_\_\_ THIS \_\_\_\_\_  
DAY OF \_\_\_\_\_, 2003 AND DULY RECORDED IN  
PLAT BOOK \_\_\_\_\_ ON PAGES \_\_\_\_\_ AND \_\_\_\_\_  
DOROTHY H. WILKEN, CLERK  
BY: \_\_\_\_\_, D.C.  
CIRCUIT COURT SEAL

**LEGEND**

⊙	CENTERLINE
SFWM	SOUTH FLORIDA WATER MANAGEMENT DISTRICT
O.R.B.	OFFICIAL RECORDS BOOK
P.R.M.	PERMANENT REFERENCE MONUMENT
⊠	SET 3.5"x3.5" CONCRETE MONUMENT WITH DISK STAMPED LB 6705 PRM
LB	LAND SURVEYING BUSINESS
PT	POINT OF TANGENCY
R	RADIUS
Δ	CENTRAL ANGLE
A	ARC LENGTH
W.S.E.	WATER AND SEWER EASEMENT



**ENGINEERS INC.**  
**CREECH ENGINEERS, INC.**  
**CIVILIZATION ENGINEERS**  
203 WEST 3rd STREET STUART, FLORIDA 34994 (772)283-1413  
4450 WEST EAU GALLIE BLVD., MELBOURNE, FL 32934 (321) 255-5434  
707 EAST PARK AVENUE, TALLAHASSEE, FL 32301 (850) 841-1705  
BOARD OF PROFESSIONAL ENGINEERS, CERTIFICATE OF AUTHORIZATION NUMBER 5139  
PROFESSIONAL SURVEYORS AND MAPPERS, AMENDED CERTIFICATE NO. LB-0006705